

# Gun Violence Protection Orders

On average, someone is killed by gun violence every three hours in California. To help stop this, the state has nine protection orders. These orders help keep people safe. They include steps like temporarily taking away someone's guns. They let others step in and give someone in trouble time to stop and get help.



Scan here to learn more about protection orders and how to reduce the risk of gun violence.

[ReducetheRisk.ca.gov](https://reducetherisk.ca.gov)



## Gun Violence Restraining Order



### WHO DOES IT HELP

People who might hurt themselves or others. Police officers

### WHO CAN FILE

- Police officers
- Close family members
- A husband, wife, partner, or roommate
- A boss or coworker
- A teacher at the person's school

### DURATION

21 days; can be extended 1-5 years

## Domestic Violence Restraining Order



### WHO DOES IT HELP

People who have been hurt or scared by someone they are close to (ex: husband or wife, partner, roommate, or family member.)

### WHO CAN FILE

- Close family members
- A husband, wife, partner, or roommate
- A boss or coworker
- A teacher at the person's school

### DURATION

21 days; extended 1-5 years



## Civil Harassment Restraining Order

### WHO DOES IT HELP

People in danger of harassment, stalking, or threats from someone without a close relationship (neighbor, coworker).

### WHO CAN FILE

People who have been threatened

### DURATION

21 days; extended 1-5 years



## Elder/Dependent Adult Abuse Restraining Order

### WHO DOES IT HELP

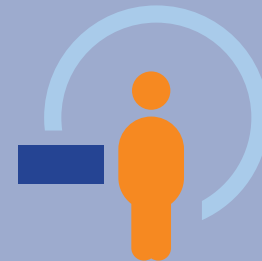
Adults over 65, or adults 18-64 with certain physical or intellectual disabilities.

### WHO CAN FILE

- Adults over 65
- Adults 18-64 with physical or intellectual disabilities
- OR someone seeking protection for them

### DURATION

21 days; extended 1-3 years



## Juvenile Restraining Order

### WHO DOES IT HELP

Children under 18 being hurt, bullied, or threatened. Or if someone needs protection from a child being violent or threatening.

### WHO CAN FILE

People involved in a juvenile court case (ex: parent, guardian, children in the household, probation officers, or social worker seeking protection for or from a juvenile under the care of the court)

### DURATION

21 days; extended 1-3 years

## Postsecondary School Violence Restraining Order



### WHO DOES IT HELP

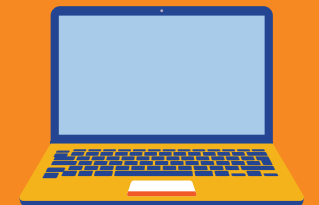
Students at a college or trade school.

### WHO CAN FILE

A college or trade school leader or someone they appoint.

### DURATION

21 days; extended 1-3 years



## Workplace Violence Restraining Order

### WHO DOES IT HELP

Employees, volunteers, independent contractors, board of directors, and public officers receiving threats in the workplace.

### WHO CAN FILE

Employers

### DURATION

21 days; extended 1-3 years

## Criminal Restraining Order



### WHO DOES IT HELP

Victims or witnesses during a criminal case.

### WHO CAN FILE

A district attorney during a criminal case.

### DURATION

Duration of the case; can be extended up to 10 years



## Emergency Protective Order (EPO-001 & EPO-002/ Emergency GVRO)

*\*A type of GVRO issued on an emergency basis*

### WHO DOES IT HELP

People who are a risk to themselves or others.

### WHO CAN FILE

Police officers

### DURATION

5 court days or 7 calendar days, and up to 21 days